



Visual & Geometric Intelligence Lab

Dept. of Computer Science Engineering
Seoul National University

Website



Lab info.



Jaesik Park (박재식)

jaesik.park@snu.ac.kr
Bldg. 301, Room 401

- **Work Experiences**
 - Intel (Staff Research Scientist)
 - POSTECH (Assistant & Associate Prof.)
- **Research Interests**
 - 3D Perception
 - Image Synthesis
 - Computer Vision Topics
- **Collaboration (as of now)**

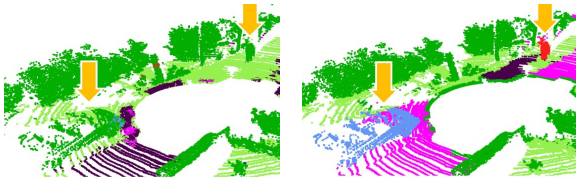


7 Ph.D, 2 M.S. students

We are looking for *self-motivated* students for the internship!

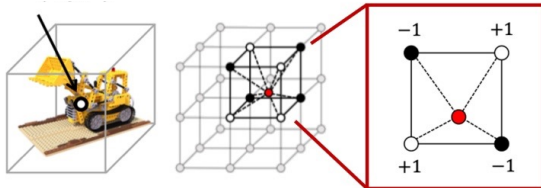


3D Reconstruction and Recognition



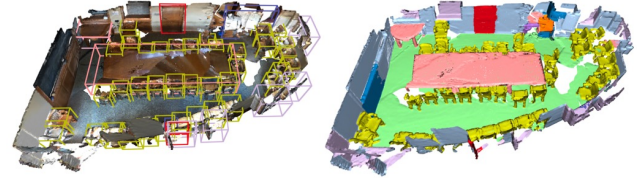
LiDomAug (CVPR 2023)

- Simple & realistic augmentation for sensor-biased LiDAR segmentation



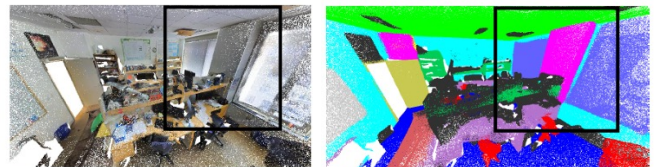
Binary Radiance Fields (NeurIPS 2023)

- A storage-efficient radiance field representation employing binary feature encoding



Fast Point Transformer (CVPR 2022)

- Lightweight transformer architecture for 3D semantic segmentation



PointMixer (ECCV 2022)

- Point-based general architecture for point cloud understanding

Image Synthesis

GigaGAN (CVPR 2023 Highlight)

- Text-to-Image generation
- Larger architecture
- Bigger dataset
- Matches SOTA DPMs
- 4K Upsampler

A portrait of a human growing colorful flowers from her hair. Hyperrealistic oil painting. Intricate details.



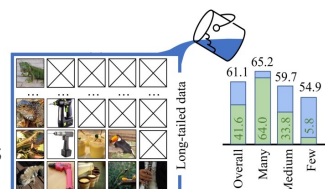
StudioGAN (TPAMI 2023)

- GANs implementation
- GANs benchmark
- Open-source library (3.3k★)



Fill-Up (arXiv 2023)

- DPMs to handle data imbalance
- Train using synthetic images
- Two-stage training



Computer Vision Topics

RISCLIP (arXiv 2023)

- Referring Image Segmentation
- Multi-modal (text-image) network
- Inter-instances relations understanding



A man kneeling with his hand on the handle of the bat



The face of the clock tower is in the shadow



Widest glass vase

InstaOrder (CVPR 2022)

- New dataset : ~110k images
- Predicting occlusion and depth orderings
- Scene geometry understanding

