

Social & Computer Network Lab



Professor 김종권
(Chong-Kwon Kim)
ckim@snu.ac.kr

Current Members

- Ph.D. program: 3
- M.S. program: 5

Alumni Members

- Ph.D. : 30
 - Professors (KAIST, Pusan, Chonnam Sungkyul, KNUJ, Kookmin, Gachon, Naval Academy, Ajou, UT, Soochunhyang, ...)
 - Researchers (Samsung, LG, KT, ETRI)
- M.S. : 67
 - Google, IBM, SAP, Qualcomm, eBay, ETRI, Samsung, NAVER, LG, SK, AhnLab, ...

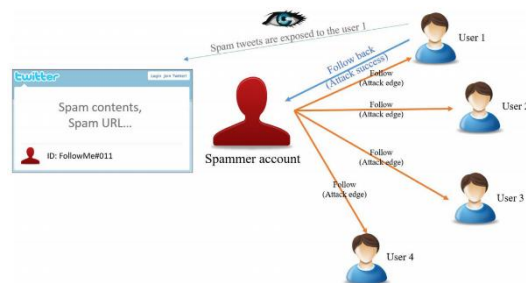
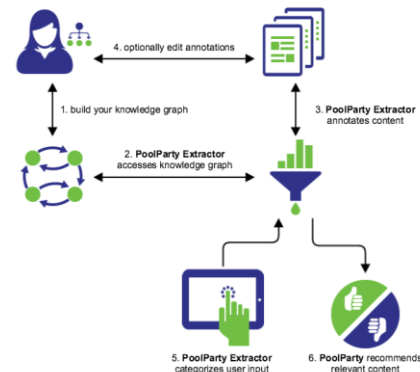
Research Areas

- Social Network Analysis
 - Recommender System
 - Anomaly Detection
 - Graph Mining & Deep Learning
- Deep Learning based Networking
 - Internet of Things (IoT)
 - Video Streaming
 - Reinforcement Learning

Social Network Analysis

Recommender System

Recommender Systems are techniques providing suggestions for items to be of use to a user, such as what items to buy, what music to listen to, or what online news to read

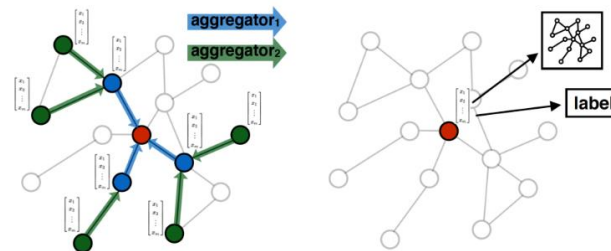


Anomaly Detection

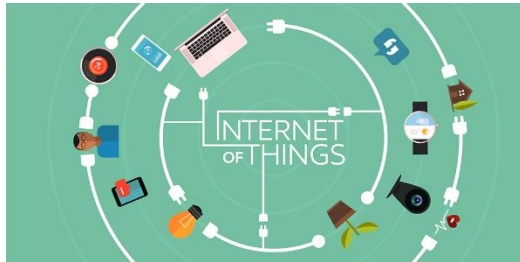
Traditional Spam research was focused on the context by comparing it with legitimate users. In our lab, we consider spam detection using online social network features

Graph Mining & Deep Learning

Graph Mining is the set of tools and techniques used to analyze the properties of real-world graphs, predict how the structure and properties of a given graph might affect some application



Deep Learning based Networking

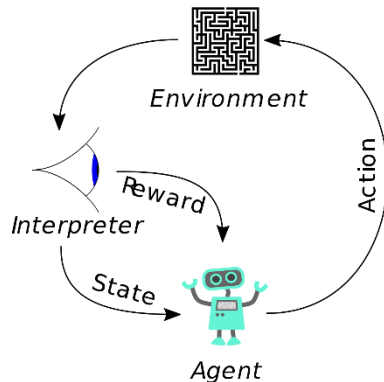
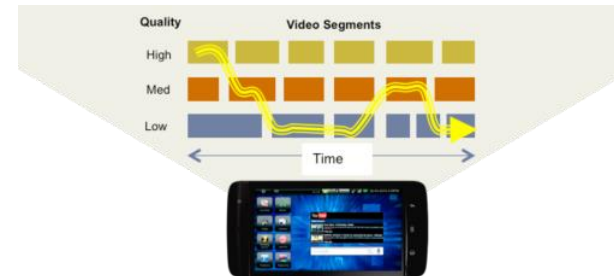


Internet of Things (IoT)

New platforms like LPWA, Sensor mote, and BLE are being adapted in IoT Networks. In our lab, we consider various solution for IoT network using Multi-channel, Multi-hop scheme.

Video Streaming

We are balancing the trade-off of bandwidth and data in the network connection of mobile device by transforming the problem as an optimization problem



Reinforcement Learning

Reinforcement learning is studied in many other disciplines, such as game theory, control theory, operations research, information theory, simulation-based optimization, multi-agent systems, swarm intelligence, statistics and genetic algorithms.